

| Spaniels (Clumber) | | 2020 Mid-Year (through July 2020) | | | | | | | | | | | | | |
|---|-------|-----------------------------------|-------|-------|-------|-------|-------|-------|-------|-------|-------|-------|-------|---|--|
| Low Entry Breed | | | | | | | | | | | | | | | |
| Metric | 2008 | 2009 | 2010 | 2011 | 2012 | 2013 | 2014 | 2015 | 2016 | 2017 | 2018 | 2019 | 2020 | Notes | |
| Registered Litters | 70 | 64 | 51 | 50 | 51 | 37 | 37 | 54 | 39 | 41 | 44 | 44 | 27 | # AKC litters registered each year | |
| Litter Complement | 332 | 325 | 239 | 220 | 255 | 188 | 171 | 228 | 185 | 170 | 194 | 201 | 133 | # Pups in each year's litters (known as the "Complement") | |
| Average Complement | 4.74 | 5.08 | 4.69 | 4.40 | 5.00 | 5.08 | 4.62 | 4.22 | 4.74 | 4.15 | 4.41 | 4.57 | 4.93 | Average # of pups per litter | |
| Individually Registered Pups (to date) | 212 | 201 | 152 | 165 | 196 | 138 | 113 | 176 | 134 | 136 | 143 | 160 | 89 | # Pups from each year's litters individually registered (to date) | |
| Actual Return Rate (to date) | 63.9% | 61.8% | 63.6% | 75.0% | 76.9% | 73.4% | 66.1% | 77.2% | 72.4% | 80.0% | 73.7% | 79.6% | 66.9% | % Pups from each year's litters individually registered (to date) | |
| Limited Registrations (to date) | 45 | 28 | 36 | 33 | 31 | 22 | 23 | 33 | 31 | 48 | 27 | 38 | 35 | # Limited Registrations from each year's litters (to date) | |
| % Complement Registered Limited (to date) | 13.6% | 8.6% | 15.1% | 15.0% | 12.2% | 11.7% | 13.5% | 14.5% | 16.8% | 28.2% | 13.9% | 18.9% | 26.3% | % Pups from each year's litters Registered as Limited (to date) | |
| Revoked Limited (to date) | 2 | - | 1 | 1 | 1 | 1 | - | 2 | 2 | - | - | - | - | # Revoked Limited Dogs from each year's litters (to date) | |
| Litters from Revoked Limited (to date) | 2 | - | 1 | 1 | 1 | 1 | - | 1 | 2 | - | - | - | - | Litters involving each year's Revoked Limited (to date) | |
| Complement Bitches Bred | 31 | 25 | 21 | 22 | 32 | 23 | 30 | 25 | 22 | 9 | 2 | 2 | - | Bitches from each year's litters that have been bred (to date) | |
| Complement Dogs Bred | 15 | 21 | 13 | 14 | 14 | 11 | 7 | 13 | 11 | 3 | 3 | 1 | - | Males from each year's litters that have been bred (to date) | |
| Total Complement Bred (to date) | 46 | 46 | 34 | 36 | 46 | 34 | 37 | 38 | 33 | 12 | 5 | 3 | - | Total from each year's litters that have been bred (to date) | |
| % Complement Bred (to date) | 13.9% | 14.2% | 14.2% | 16.4% | 18.0% | 18.1% | 21.6% | 16.7% | 17.8% | 7.1% | 2.6% | 1.5% | 0.0% | % of each year's litters that have been bred (to date) | |
| Complement Bitches in Conformation | 46 | 53 | 38 | 43 | 60 | 44 | 48 | 61 | 41 | 40 | 46 | 24 | 1 | # Bitches from each year's litters in Conformation (to date) | |
| Complement Dogs in Conformation | 44 | 40 | 28 | 39 | 51 | 31 | 30 | 49 | 31 | 20 | 25 | 20 | 1 | # Males from each year's litters in Conformation (to date) | |
| Total Complement in Conformation (to date) | 90 | 93 | 66 | 82 | 111 | 75 | 78 | 110 | 72 | 60 | 71 | 44 | 2 | Total from each year's litters in Conformation (to date) | |
| % Complement in Conformation (to date) | 27.1% | 28.6% | 27.6% | 37.3% | 43.5% | 39.9% | 45.6% | 48.2% | 38.9% | 35.3% | 36.6% | 21.9% | 1.5% | % of each year's litters in Conformation (to date) | |
| Total Complement in Companion (to date) | 11 | 15 | 11 | 14 | 11 | 13 | 7 | 18 | 9 | 5 | 4 | 1 | - | Total from each year's litters in Companion (to date) | |
| % Complement in Companion (to date) | 3.31% | 4.62% | 4.60% | 6.36% | 4.31% | 6.91% | 4.09% | 7.89% | 4.86% | 2.94% | 2.06% | 0.50% | 0.00% | % of each year's litters in Companion (to date) | |
| Total Complement Placing in Performance (to date) | 3 | 10 | 8 | 8 | 10 | 4 | 4 | 10 | 8 | 3 | 4 | 1 | - | Total from each year's litters placing in Performance (to date) | |
| % Complement Placing in Performance (to date) | 0.9% | 3.1% | 3.3% | 3.6% | 3.9% | 2.1% | 2.3% | 4.4% | 4.3% | 1.8% | 2.1% | 0.5% | 0.0% | % of each year's litters placing in Performance (to date) | |

| Metric | 2008 | 2009 | 2010 | 2011 | 2012 | 2013 | 2014 | 2015 | 2016 | 2017 | 2018 | 2019 | 2020 | Notes |
|---|------|--------|--------|-------|-------|-------|-------|-------|--------|--------|-------|--------|--------|--|
| AKC Dog Registrations | 271 | 217 | 168 | 164 | 188 | 170 | 125 | 158 | 131 | 134 | 156 | 169 | 117 | # Registered from AKC Litters during each year |
| FSS Registrations | - | - | - | - | - | - | - | - | - | - | - | - | - | # of FSS Dog Registrations each year |
| Conditional Registrations | - | - | - | - | - | - | - | - | - | - | - | - | - | # of Conditional Registrations each year |
| Open Registrations | - | - | - | - | - | - | - | - | - | - | - | - | - | # of Open Registrations each year |
| Foreign Registrations | 9 | 3 | 9 | 5 | 4 | 5 | 12 | 16 | 11 | 11 | 4 | 10 | 1 | # of Foreign-born Registrations each year |
| Total Dogs Registered | 280 | 220 | 177 | 169 | 192 | 175 | 127 | 174 | 142 | 145 | 160 | 179 | 118 | Total Dog Registrations each year |
| Unique Bitches Bred (each year) | 65 | 60 | 49 | 47 | 47 | 37 | 36 | 51 | 37 | 36 | 40 | 41 | 26 | Unique # bitches bred each year |
| Unique Dogs Bred (each year) | 51 | 51 | 38 | 39 | 41 | 32 | 31 | 40 | 28 | 26 | 31 | 30 | 22 | Unique # males bred each year |
| Total Bred (each year) | 116 | 111 | 87 | 86 | 88 | 69 | 67 | 91 | 65 | 62 | 71 | 71 | 48 | Unique # bred each year |
| Unique Bitches in Conformation (each year) | 185 | 183 | 176 | 167 | 136 | 154 | 146 | 151 | 156 | 145 | 153 | 152 | 81 | Unique # of bitches in Conformation each year |
| Unique Dogs in Conformation (each year) | 175 | 155 | 138 | 139 | 142 | 142 | 139 | 130 | 131 | 112 | 107 | 100 | 62 | Unique # of males in Conformation each year |
| Total Unique in Conformation (each year) | 360 | 338 | 314 | 286 | 278 | 296 | 285 | 281 | 287 | 257 | 260 | 252 | 143 | Unique # in Conformation each year |
| % Change Conformation | | -6.1% | -7.1% | -8.9% | -2.8% | 6.5% | -3.7% | -1.4% | 2.1% | -10.5% | 1.2% | -3.1% | -43.3% | YOY % Change Conformation total dogs |
| Unique Bitches in Companion (each year) | 32 | 24 | 29 | 26 | 21 | 24 | 23 | 24 | 24 | 20 | 19 | 21 | 10 | Unique # of bitches in Companion each year |
| Unique Dogs in Companion (each year) | 23 | 23 | 18 | 20 | 23 | 19 | 18 | 20 | 18 | 16 | 18 | 12 | 6 | Unique # of males in Companion each year |
| Total Unique in Companion (each year) | 55 | 47 | 47 | 46 | 44 | 43 | 41 | 44 | 42 | 36 | 37 | 33 | 16 | Unique # in Companion each year |
| % Change Companion | | -14.5% | 0.0% | -2.1% | -4.3% | -2.3% | -4.7% | 7.3% | -4.5% | -14.3% | 2.8% | -10.8% | -51.5% | YOY % Change Companion total dogs |
| Unique Bitches Placing in Performance (each year) | 12 | 12 | 11 | 7 | 9 | 9 | 12 | 11 | 11 | 16 | 11 | 22 | 10 | Unique # of bitches placing in Performance each year |
| Unique Dogs Placing in Performance (each year) | 5 | 6 | 5 | 8 | 8 | 9 | 5 | 8 | 6 | 5 | 13 | 14 | 4 | Unique # of males placing in Performance each year |
| Total Unique Placing in Performance (each year) | 17 | 18 | 16 | 15 | 17 | 18 | 17 | 19 | 17 | 21 | 24 | 36 | 14 | Unique # placing in Performance each year |
| % Change Performance | | 5.9% | -11.1% | -6.3% | 13.3% | 5.9% | -5.6% | 11.8% | -10.5% | 23.5% | 14.3% | 50.0% | -61.1% | YOY % Change Performance total dogs placing |

| % Change YOY | 2008 | 2009 | 2010 | 2011 | 2012 | 2013 | 2014 | 2015 | 2016 | 2017 | 2018 | 2019 |
|--------------------|------|--------|--------|-------|-------|--------|-------|-------|--------|-------|-------|-------|
| Registered Litters | N/A | -8.6% | -20.3% | -2.0% | 2.0% | -27.5% | 0.0% | 45.9% | -27.8% | 5.1% | 7.3% | 0.0% |
| Litter Complement | N/A | -2.1% | -26.5% | -7.9% | 15.9% | -26.3% | -9.0% | 33.3% | -18.9% | -8.1% | 14.1% | 3.6% |
| Registered Dogs | N/A | -21.4% | -19.5% | -4.5% | 13.6% | -8.9% | 0.0% | 27.0% | -18.4% | 2.1% | 10.3% | 11.9% |

These %'s are calculated to show the change each year from the previous year.

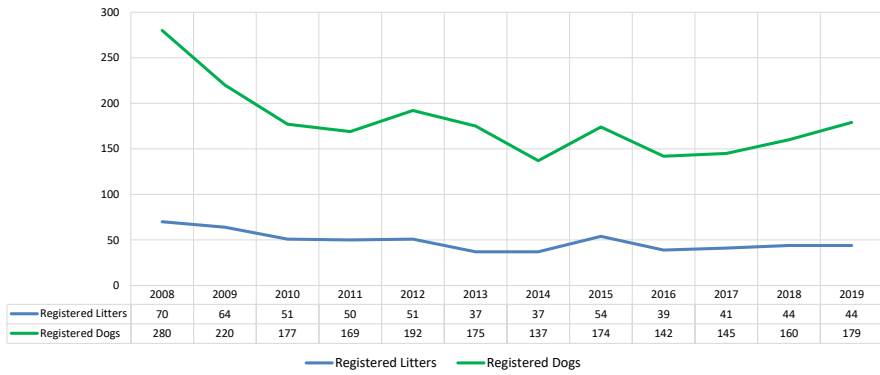
| % Change Relative 2008 | 2008 | 2009 | 2010 | 2011 | 2012 | 2013 | 2014 | 2015 | 2016 | 2017 | 2018 | 2019 |
|------------------------|------|--------|--------|--------|--------|--------|--------|--------|--------|--------|--------|--------|
| Registered Litters | 0.0% | -8.6% | -27.1% | -28.6% | -27.1% | -47.1% | -47.1% | -22.9% | -44.3% | -41.4% | -37.1% | -37.1% |
| Litter Complement | 0.0% | -2.1% | -28.0% | -33.7% | -23.2% | -43.4% | -48.5% | -31.3% | -44.3% | -48.8% | -41.6% | -39.5% |
| Registered Dogs | 0.0% | -21.4% | -36.8% | -39.6% | -31.4% | -37.5% | -51.1% | -37.9% | -49.3% | -48.2% | -42.9% | -36.1% |

These %'s are calculated to show the change each year compared to 2008.

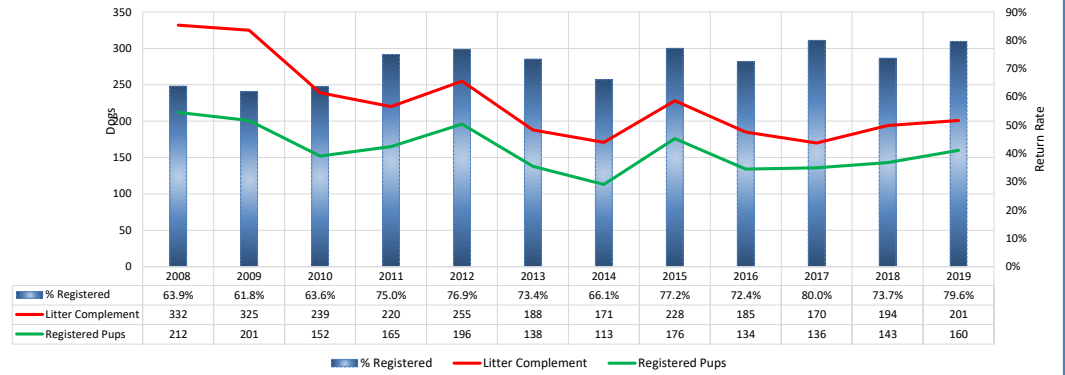
Spaniels (Clumber)

2020 Mid-Year (through July 2020)

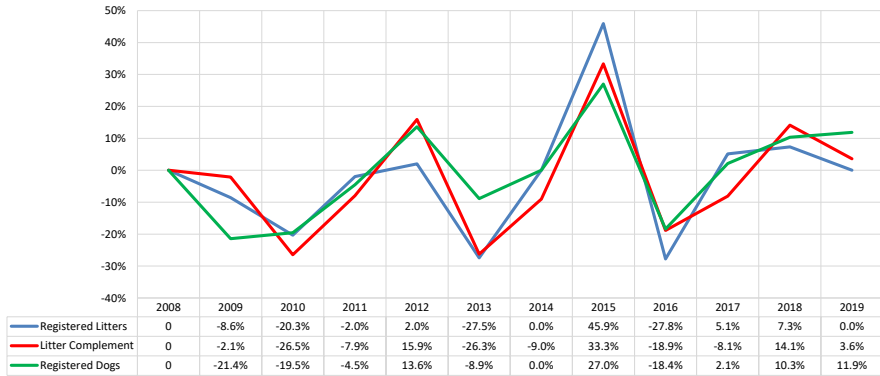
AKC Dog & Litter Registrations



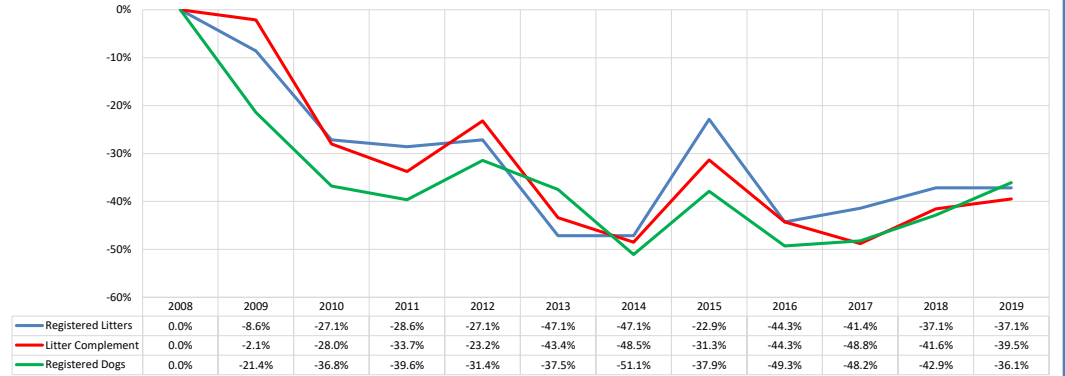
% of Each Year's Litter Complement that were Eventually Registered



% Change from Previous Year (YOY)



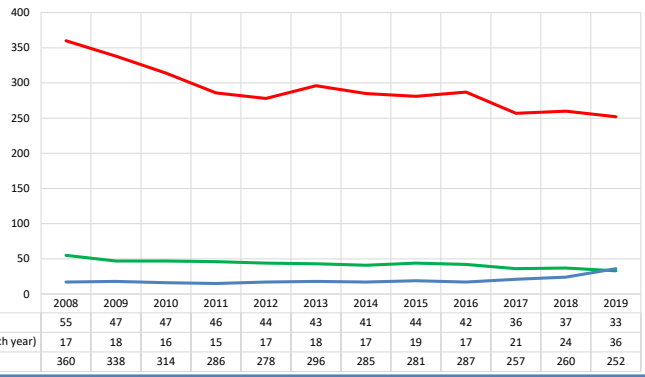
% Change Relative to 2008



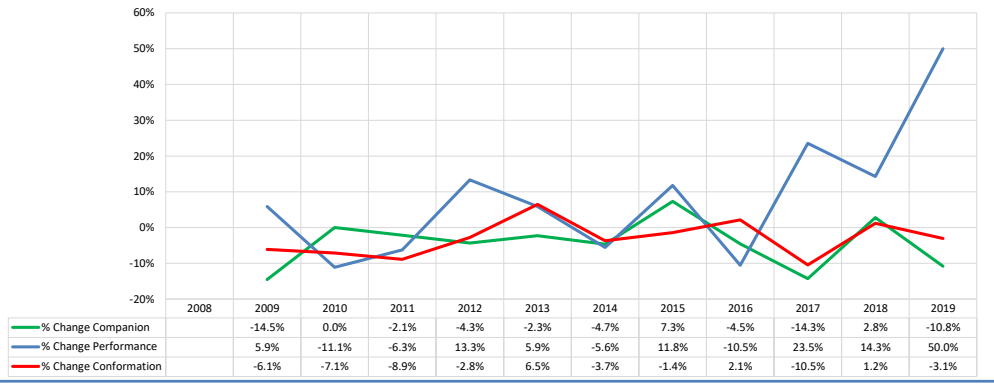
Spaniels (Clumber)

2020 Mid-Year (through July 2020)

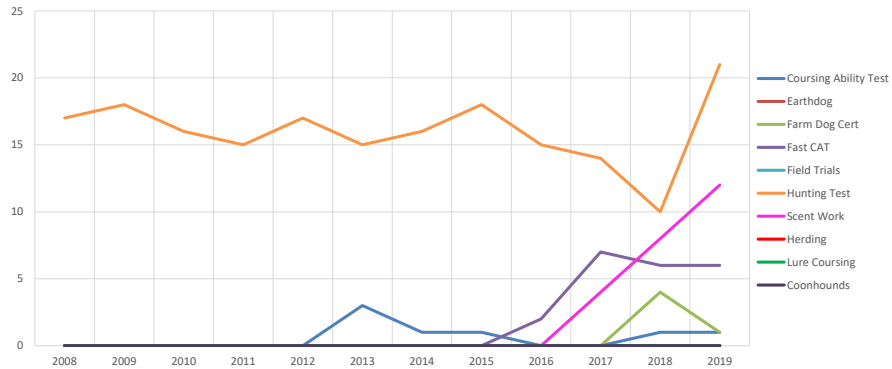
Competing: Total Unique Dogs by Sport Each Year



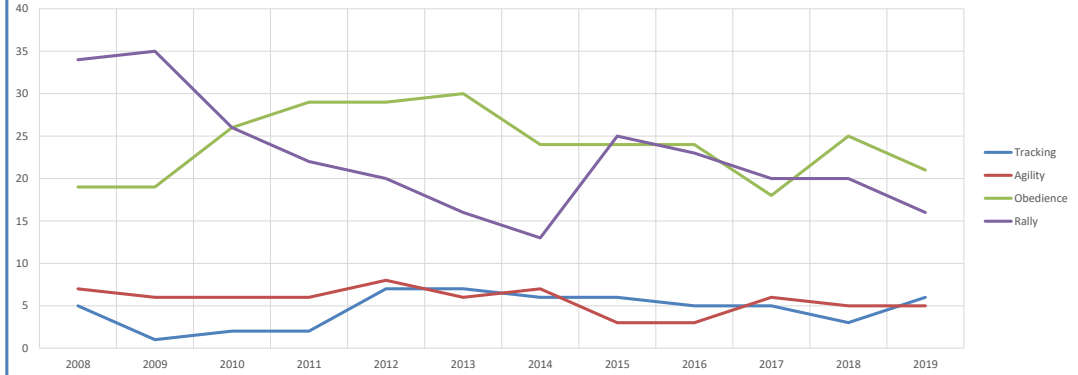
Competing: % Change Unique Total Dogs Year over Year by Sport



Performance: Total Unique Dogs Placing



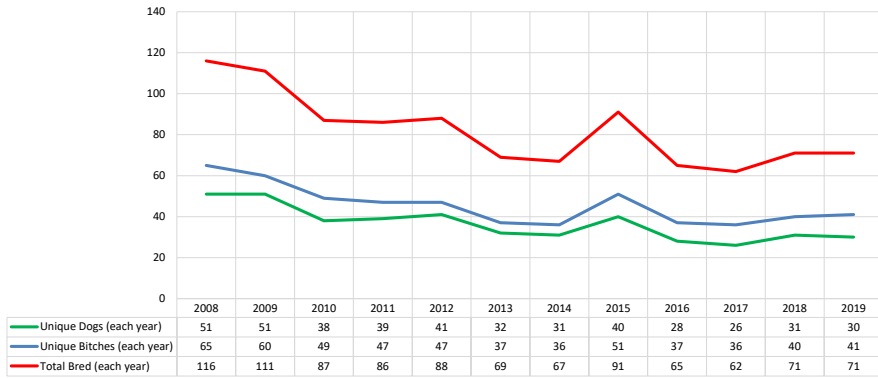
Companion: Total Unique Dogs Entered



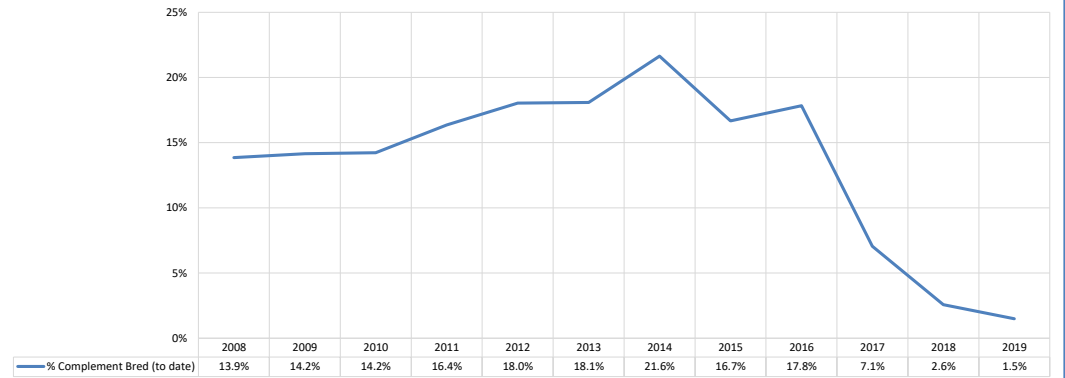
Spaniels (Clumber)

2020 Mid-Year (through July 2020)

Breeding: Unique Individual Dogs & Bitches Bred Each Year



% of Each Year's Litter Complement that have been Bred (to date)



Competing: % of Each Year's Litter Complement in Competition

